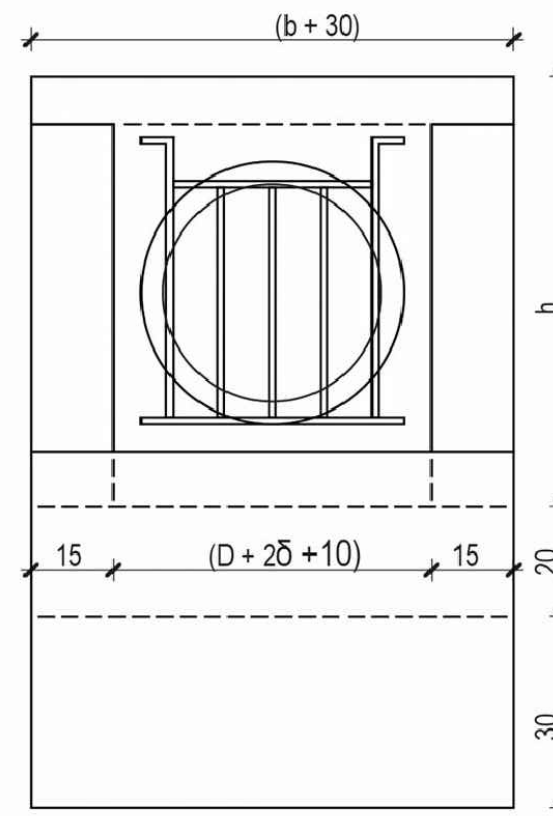


[illegible]

D/Ö	h	a	b	c
40/4,2	78,2	87	58	62
50/5,0	90	105	70	80
60/5,8	102	123	82	98
80/7,4	125	157	105	132

Technical drawing of a rectangular plate. The overall width is labeled $(D + 2\delta + 10)$. The overall height is labeled 15 . A central slot is shown with a width of 5 and a height of 5 . The distance from the center of the slot to the nearest edge is labeled D . The drawing includes a top view and a side view, with dashed lines indicating the slot's position and dimensions.



PROJEKTOWAŁ	IMIĘ I NAZWISKO	PODPIS
PROJEKTANT:	mgr inż. Piotr Mańczak WKP/0078/P00D/14	
SPRAWDZAJĄCY:	mgr inż. Jacek Weiss 7131/183/P/2002	